



# BUILD TO SERVE GROW IN LOVE

MIDVALE COMMUNITY LUTHERAN CHURCH



AND MAY THE LORD MAKE YOU INCREASE AND  
ABOUND IN LOVE FOR ONE ANOTHER AND FOR ALL.

1 THESSALONIANS 3:12

# BUILD<sup>TO</sup> SERVE GROW<sup>IN</sup> LOVE

Dear Midvale Friends:

The church is a place to explore life's deepest questions.

As a community, we engage the primary questions of life together. Who is God? What is my purpose? How am I called to serve my neighbors and the world? For over seventy years Midvale has explored these questions, sharing God's grace, connecting people to one another, and serving the needs of the community and world.

Recently a new family at Midvale shared this story with us. On a walk, out of the blue, their young daughter asked, "Who is God?" The parents took notice. They decided to find a community to support them in answering this question. They ended up with us, at Midvale. Why? They saw a community that embodies God's love, encourages questions, and values the gifts of everyone to make a difference in the world. It is just what they hoped their child might learn about who God is!

Today, God is calling us into the future, inviting us to build on our already vibrant community. This is the vision of our "Build to Serve: Grow in Love Campaign." We achieved a major milestone in our successful completion of the Sanctuary renovation in 2010, and paid off the mortgage seven years early. It is now time for the next step forward.

Renovating our Ministry Wing gives us an exciting opportunity to create welcoming, flexible and effective spaces for our ministries, our staff and the community. It will dramatically improve our environmental sustainability. The renewed facilities will be the foundation for our church to be a place of God's welcome for years to come!

As you read through these pages, imagine the people who will be gathered here years from now, the questions they will ask, the enduring and welcoming love of God they will experience together and the inspiration they will receive to love and serve in Jesus' name.

You can be a part of that future. We hope you will!

**Blessings and Peace,**

*Pastor Katie* *Pastor Blake*

**Pastor Katie**

**Pastor Blake**

*Laurie Stensland* *Mark Thompson*

**Laurie Stensland**

**Mark Thompson**

Capital Campaign Co-Chair

Capital Campaign Co-Chair



# WIDE OPEN WELCOME

“Welcome” stands at the heart of Midvale Community Lutheran Church’s ministry. Whether you have been around for decades or only just arrived, you receive a warm welcome at Midvale. It’s just who we are.

The heart of welcome is the love of Jesus extended to the world. From the open table at Holy Communion to the open grace of being a Reconciling in Christ Congregation, Midvale embodies the welcome and love of Jesus.

We feel that sense of welcome in the sanctuary, a place of peace and refreshment. We feel that welcome in conversations before and after worship.

Everyone feels this welcome, from young to old. One of our younger members, Miles, describes it this way, “Knowing so many places in the church, it feels like home.”



## CAMPAIGN GOAL : \$2.7 MILLION TO \$3 MILLION

Our campaign theme sums up our purpose here at Midvale. Since our beginning, we have lived out God’s grace in worship, community and in service. “Community” is our middle name! God’s people have gathered here as a community of faith. The greater Madison community has gathered here through community organizations.

Midvale’s mission has not changed, but the world certainly has. Consider technology: just 20 years ago cell phones were relatively unusual. Today you would be hard pressed to find anybody, from a high school youth to a senior, who does not have a smartphone!

In 2008 Midvale engaged in a significant capital program to make our worship and gathering space feel welcoming and modern. The new sanctuary created an uplifting environment for worship. Now is the time to create the same environment for education and the work of ministry.

God is calling us to continue to embody the love of Christ through our ministry in this time and place. The Build to Serve: Grow in Love Campaign will transform our ministry wing, enhancing our ability to live out the values we proclaim.

*OUR THEME, BUILD TO SERVE: GROW IN LOVE SHARES THE VISION THAT OUR RENEWED BUILDING WILL BE A VITAL SPACE TO SERVE OUR COMMUNITY AND TO INSPIRE OUR CHURCH IN LOVING GOD AND LOVING OUR NEIGHBOR.*

**PASTOR BLAKE**

# WELCOME AND HOSPITALITY

Hospitality is central to our ministry. Creating a welcoming space for all is one of our church's core values. These renovations will make our entire building a welcoming place for everyone. Transforming the ministry wing increases the sense of welcome by:

- » Opening up the stairwell in the main entryway so people can easily navigate to the upper floor.
- » Adding a hospitality/reception desk in the gathering space for improved welcome and security.
- » Creating an upper floor gathering space for parents and children.
- » Constructing inclusive use restrooms on all floors. (Inclusive use restrooms are single-stall and available to people of all genders, to families with children, and to people with disabilities.)
- » Installing a new HVAC system (heating and cooling). This will make all floors comfortable and usable year-round.

# SUSTAINABILITY

As good stewards of God's creation, we make every effort to reduce the church's energy footprint. This also reduces costs, providing more resources for ministry.

The renovations to the ministry wing address some long-term issues and improve the building's overall energy efficiency. This work will include:

- » Replacing the 22-year-old roof for the ministry wing and gathering space.
- » Repairing the exterior flashings and adding waterproofing.
- » Replacing 23 year old boilers, pumps, and radiators and heating controls from the 1960's.
- » Installing new mechanical and electrical systems, including air conditioning, high-performance ventilation and filtration, energy efficient lighting, and water saving plumbing fixtures.
- » Improving exterior wall and roof insulation, and lighting and heating controls to conserve energy.
- » Removing existing asbestos materials.

*SUPPORTING THE FLOURISHING  
MINISTRY IN THE PRESENT AND  
CASTING A VISION FOR CONTINUING  
TO TELL THE STORY OF GOD'S LOVE IN  
THE FUTURE. THIS IS THE GOOD WORK  
WE UNDERTAKE IN THE RENOVATION  
OF THE MINISTRY WING.*

**PASTOR KATIE**





# MIDVALE COMMUNITY LUTHERAN CHURCH CAPITAL CAMPAIGN STEERING COMMITTEE

**General Chairs:**  
Laurie Stensland  
and Mark Thompson

**Information Chair:**  
Mark Swandby

**Inspiration Chair:**  
Heather Dean

**Hospitality Chairs:**  
Kirstin Nackers  
and Sarah Harrison

**Response Chair:**  
Dan Morse

## MAXIMIZE SPACE FOR MINISTRY

Ministry flourishes when we provide the resources people need to fulfill God's dreams. The building is one of those tools. We need the right space to facilitate our ministry. On the main floor, our dedicated staff work in cramped, inefficient spaces, without workstations for everyone, and no easily accessible meeting or collaboration spaces. On the upper floor, our Sunday School likewise gathers in out of date, inflexible classrooms. Our lower level, improved thanks to waterproofing the foundation, is still dark, dated, and not configured for the flexible uses needed.



**WE WILL TRANSFORM THE MAIN FLOOR BY:**

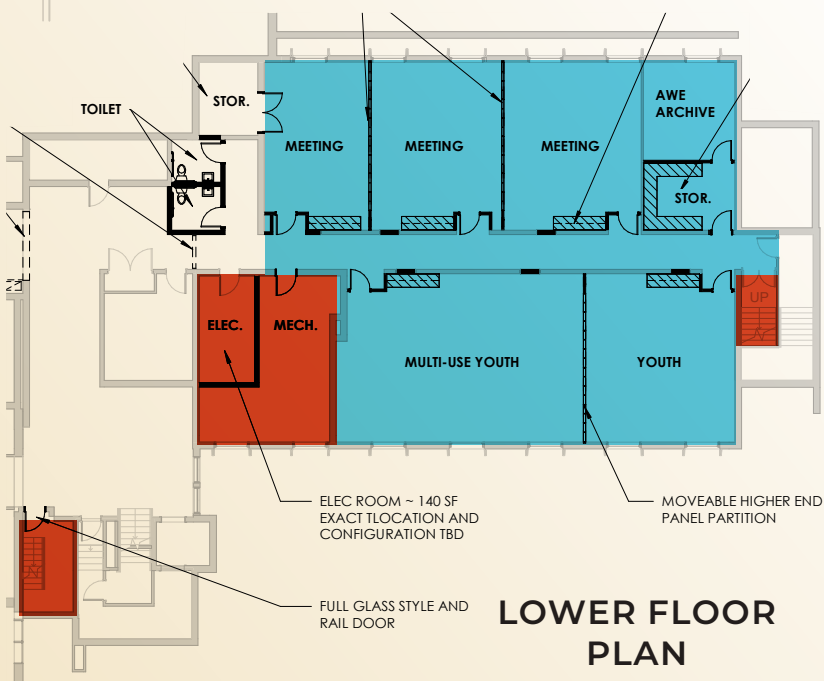
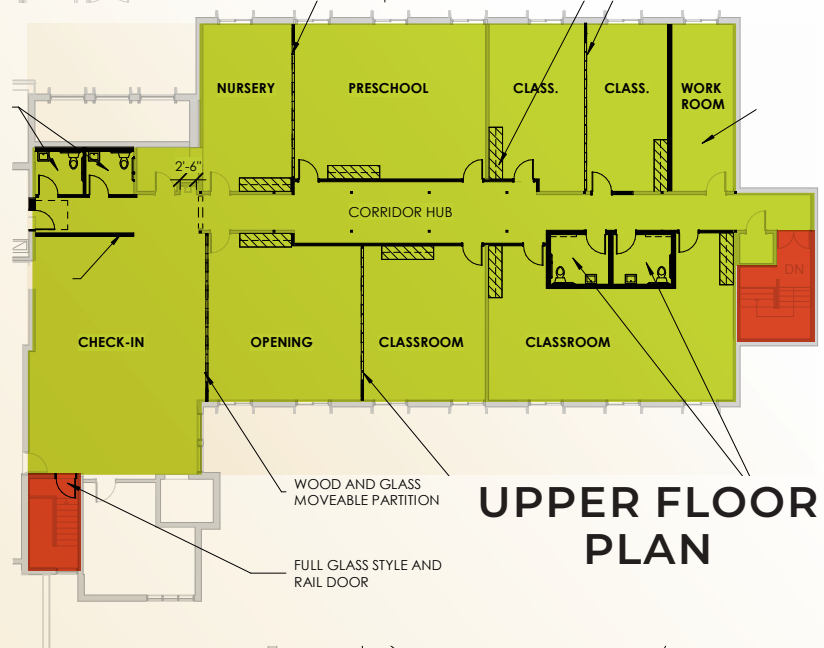
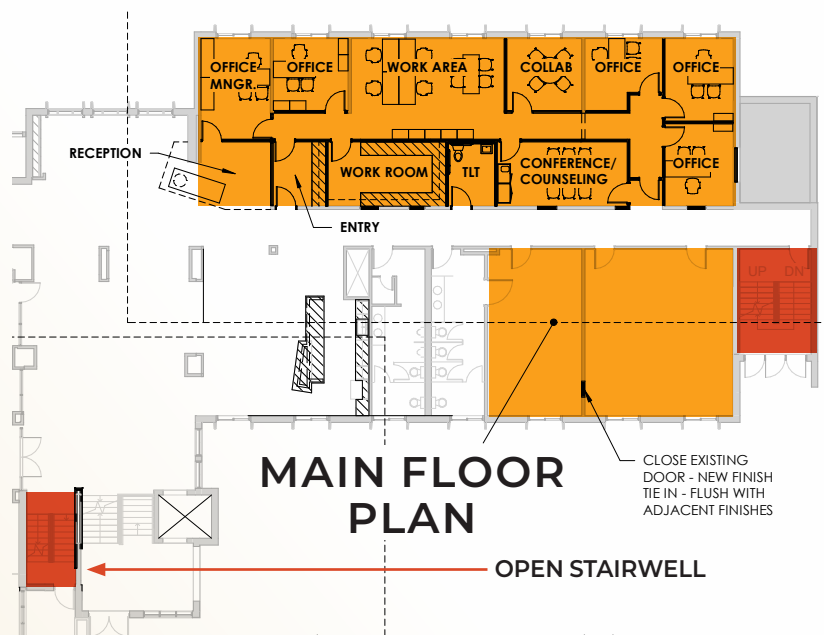
- » Providing suitable office space for full time staff.
- » Creating flexible multi-use spaces for part time staff and volunteers.
- » Adding a hospitality/reception desk.

**WE WILL ENHANCE THE UPPER FLOOR SPACE BY:**

- » Creating a gathering and check-in area to welcome parents and families.
- » Installing clear view dividers to allow parents to observe activities and their children.
- » Installing partitions to create more usable and flexible space.

**CHANGES TO THE LOWER FLOOR WILL EXPAND ITS USABILITY BY:**

- » Updating existing youth ministry spaces.
- » Creating high quality meeting spaces to replace the former main floor meeting space.
- » Configuring rooms for flexibility and potential uses such as choir rehearsal space, yoga, community groups and more.
- » Improving storage for the Lutheran World Relief Quilters and the Art and Worship Environment team.



At Midvale Community Lutheran Church, we Build to Serve and Grow in Love. Building these physical spaces gives us the privilege of fulfilling God's call to serve in the world. Each moment of serving, every opportunity to embody the gracious welcome of Jesus, allows us to Grow in Love.

## GIFTS NEEDED

VALUE OF GIFTS	# OF GIFT	RUNNING TOTAL
\$300,000	1	\$300,000
\$200,000	1	\$500,000
\$100,000	3	\$800,000
\$75,000	4	\$1,100,000
\$50,000	6	\$1,400,000
\$30,000	8	\$1,640,000
\$24,000	10	\$1,880,000
\$18,000	12	\$2,096,000
\$12,000	14	\$2,264,000
\$9,000	18	\$2,426,000
\$6,000	22	\$2,558,000
\$4,500	26	\$2,675,000
\$3,600	40	\$2,819,000
\$1,800	60	\$2,927,000
\$1,095	50	\$2,981,750
\$600	30	\$3,000,000

## GIFTS OVER TIME

AMOUNT PER WEEK	AMOUNT PER MONTH	AMOUNT PER YEAR	3-YEAR AMOUNT
\$1602	\$6944	\$83,333	\$250,000
\$641	\$2,778	\$33,333	\$100,000
\$512	\$2,222	\$26,667	\$80,000
\$384	\$1,667	\$20,000	\$60,000
\$256	\$1,111	\$13,333	\$40,000
\$192	\$833	\$10,000	\$30,000
\$160	\$694	\$8,333	\$25,000
\$128	\$555	\$6,666	\$20,000
\$96	\$416	\$5,000	\$15,000
\$64	\$277	\$3,333	\$10,000
\$32	\$138	\$1,667	\$5,000
\$23	\$100	\$1,200	\$3,600
\$12	\$50	\$600	\$1,800
\$6.50	\$28	\$336	\$1,000
\$3.85	\$17	\$200	\$600

## COMMITMENT

Please prayerfully consider joining your hands with others in the Build to Serve: Grow in Love capital campaign. To achieve our vision, our goal is to raise between \$2.7 million and \$3 million. We will reach this goal as we come together to invest in God's future for us. Your contribution may be given over the next three years. As you consider your participation, a Gifts Needed chart has been created that would allow us to reach our goal. It may assist you as you consider your generosity to this campaign.

WHAT MAKES MIDVALE CONTINUE TO GROW AND PROSPER IS OUR DEEP-ROOTED FAITH. WE ARE RESILIENT BECAUSE WE FOLLOW THE GOSPEL. WE FOLLOW, "LOVE THY NEIGHBOR." AS A CONGREGANT, I CAN SEE IT. IT'S WHEN PASTOR KATIE ASKS US, "WHAT WOULD JESUS DO?"

**GREG LAMPE**

# COMMONLY ASKED QUESTIONS

## **When can I begin my gift offerings for the campaign?**

Unless you prefer a different timetable, the contribution period begins June 2024. The Intent Form has a place for you to indicate how and when you will fulfill your commitment.

## **How long will the Build to Serve: Grow in Love campaign last?**

Our Build to Serve: Grow in Love campaign will be three years: June 2024 – May 2027. If you feel you can make a larger gift by extending the time, you are welcome to do so. You may also make a one-time gift or make payments for less than three years. Qualified Charitable Distributions from IRAs can be accepted. Those 73 years old or older often find that giving through an IRA Required Minimum Distribution enables them to make a significant gift when that timing is best for them.

## **Is it possible to make gifts to the Campaign without making a specific commitment?**

Yes, but returning an Intent Form, while never legally binding, gives us an indication of what we can expect and helps us steward the project in a responsible way. Many people find making a commitment is an act of faith, made in gratitude to God, that draws them even closer to our mission and ministry. Please fill out an Intent Form, even if you do not make a financial commitment. The response from the congregation will be a compelling story to tell our new members and our community as we prepare to have an even stronger impact with our ministry.

## **Do all gifts to the Build to Serve: Grow in Love campaign have to be cash?**

No. Gifts of property, appreciated stock, mutual funds, cash value from insurance policies or policy loan proceeds, Certificates of Deposit (CDs), bonds and annuities are some of the ways you can give. All of these gifts may be subject to restrictions and limitations. Please consult your financial adviser or accountant before making the gift.

We also ask that you contact Amanda Mueller, the church business manager, at 608-238-7119 (church office) or [bookkeeper@midvalelutheran.org](mailto:bookkeeper@midvalelutheran.org) to discuss the best way to make gifts other than cash. There may be important tax implications. Unless you are trying to capture a capital loss, do not sell the property yourself as you may be subject to capital gains tax rules. Midvale or your financial professional can help structure transactions for mutual benefit.

## **What is the advantage of giving appreciated stocks or property?**

Gifts of appreciated assets to Midvale are not subject to capital gains tax, and are eligible for a charitable gift tax deduction for their fair market value.

## **How do I make a gift of appreciated stock?**

Your broker can transfer shares from your account to the church. Contact Amanda Mueller at 608-238-7119 (church office) or [bookkeeper@midvalelutheran.org](mailto:bookkeeper@midvalelutheran.org) for account information.

Important! Do not sell the stock yourself or you may be subject to capital gains tax. The church's broker will sell the stock, and you will receive a deductible credit based on the average market value on the day the stock is transferred.

## **Will I be asked to give a specific amount?**

You will be asked to prayerfully consider an amount based on the *Gifts Needed Chart*, to reach our goal. If every gift is fulfilled, we can exceed our goal. Please note giving to the Build to Serve: Grow in Love campaign is in addition to your regular offerings that support Midvale's daily ministry.

## **Will we have a debt following this campaign?**

We intend to complete the entire scope of work, with a mortgage covering the remaining balance. Future mortgage reduction appeals similar to our handling of the 2010 sanctuary renovation could be anticipated.

## **What is the project timeline?**

After assessing the results of the campaign, a final plan for the Ministry Wing renovation will be brought to the congregation for approval in fall of 2024 and construction could potentially begin in the summer of 2025.



## CAMPAIGN PRAYER

*Gracious and creative God, we are yours, made in your image and claimed by your love. So draw our hearts to you, so guide our minds, so fill our imaginations, that we embrace your future. Inspire us to use all of who we are for your glory and for the good of your people, through our Lord and Savior, Jesus Christ. Amen.*